

 **isiflo FLEXI**



[www.isiflo.com](http://www.isiflo.com)

 **isiflo FLEXI**

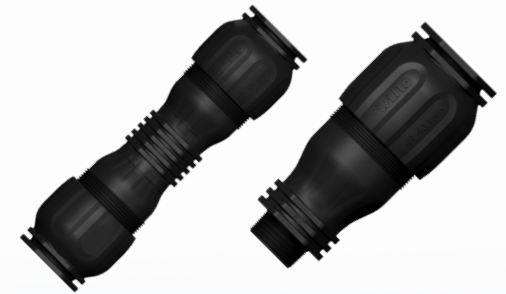
## Features and benefits:

*The high tech composite material combined with the product's function and design gives the coupling a great deal of benefits and unique features:*

- 100% Corrosion resistant
- Lead-free
- High strength and metal-like properties
- No material sag over time
- Installation can be carried out regardless of temperature and weather conditions
- Simple and user friendly, minimizes the possibility of incorrect assembly
- Quick and easy to install
- Approved to be buried under ground
- Approved for freezing water  
ref. BRL-K 534/03
- Possibility for dismantling and re-use
- Possible to dismantle without special tools
- 20 years product warranty
- Designed for 50 years of lifetime
- New dimension of flexibility
- Low installation force
- For all types of pipes



  
**isiflo®**  
**FLEXI**



# THE PROBLEM SOLVER!



Norwegian quality since 1965



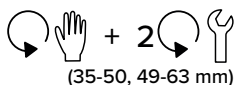
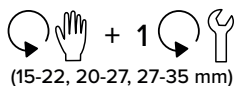
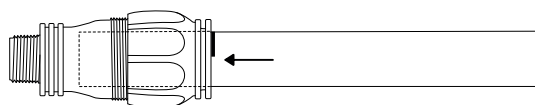
Norwegian quality since 1965

### Function description:

The design of ISIFLO Flexi ensures that the pipe enters the coupling easily, avoiding the need for a high push-in force. There is no need to chamfer the pipe-end before installation. Just insert the pipe until direct contact with the flexible internal stop.

As you tighten the nut, the plastic teeth and the metal nails in the grip/compression cartridge, grips the pipe. At the same time the grip/compression cartridge compresses the o-ring against the pipe ensuring a well sealed connection under all pressure conditions. The plastic teeth will grip on all soft materials like PE, PEX and even Lead.

The metal nails will work on all harder materials like very hard plastics and metals.



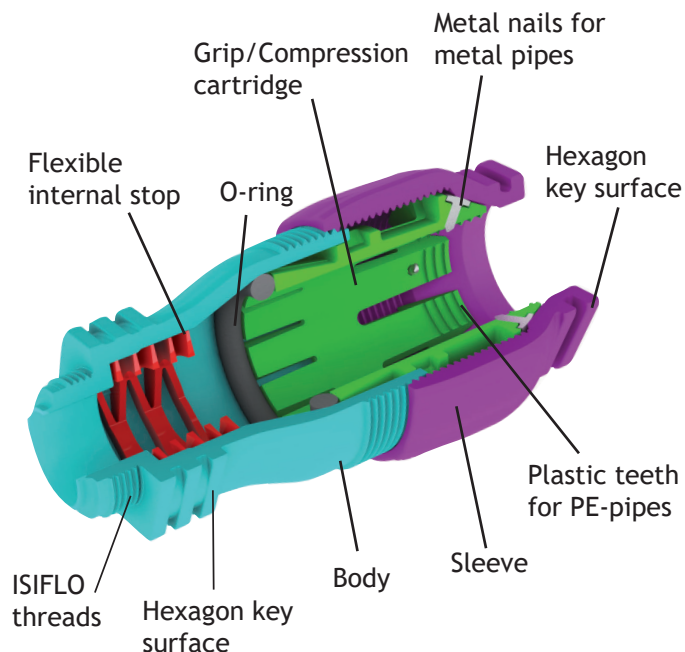
### Area of application / Working pressure:

Area of applications:

- Drinking water
- Vacuum (as suction side of pump)

Working pressure:

- Water: up to 16 bar / 232 PSI



### TYPE 113: FLEXI MALE COUPLING

D x R	Item Number
15-22 x 1/2"	8220002
15-22 x 3/4"	8220003
20-27 x 3/4"	8220004
20-27 x 1"	8220005
27-35 x 3/4"	8220024
27-35 x 1"	8220007
35-50 x 1"	8220025
35-50 x 1 1/4"	8220028
35-50 x 1 1/2"	8220008
49-63 x 2"	8220009



### TYPE 101: FLEXI - FLEXI

D x D	Item Number
15-22 x 15-22	8221011
20-27 x 20-27	8221012
27-35 x 27-35	8221013



### TYPE 104: FLEXI - SPRINT

D x Di	Item Number
15-22 x 20mm	8221041
20-27 x 25mm	8221042
20-27 x 32mm	8221043
20-27 x 40mm	8221044
27-35 x 25mm	8221045
27-35 x 32mm	8221046
27-35 x 40mm	8221047
35-50 x 32mm	8221048
35-50 x 40mm	8221049
35-50 x 50mm	8221051
49-63 x 32mm	8221052
49-63 x 40mm	8221054
49-63 x 50mm	8221050
49-63 x 63mm	8221053



D = Dimension (OD) in mm  
 Di = Isiflo's thread dimension  
 R = Conical pipe thread acc. to ISO 7  
 G = Cylindrical pipe thread acc. to ISO 228