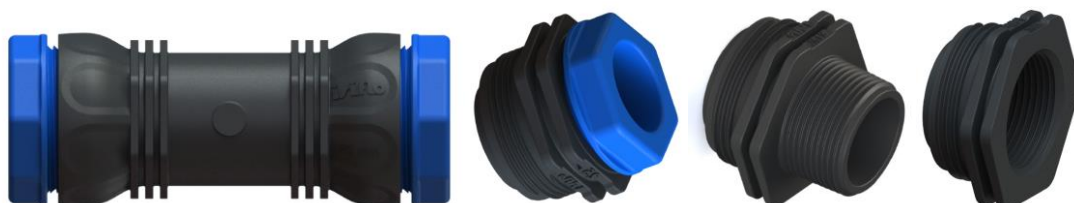


ISIFLO Eco Line – drinking water



Isiflo Eco Line compression fittings for extruded PE-pipes according to EN-12201 SDR11 and SDR17 gives a tight and end-load resistant connection. The couplings are easy to use and gives a reliable long-term connection. Isiflo Eco Line can only be combined with other components in the Eco Line program.

Visit www.isiflo.com for more details.

1. Product Description

Materials	PA12/GF, POM and EPDM
Dimension	20-63 mm
Max working pressure	16 bar
Temperature range	Up to +40°C
Medium	Water (16 bar), Air (10bar). Other medium; contact Isiflo for details.
Approvals	Kiwa
Surface treatment	None
Color	Black/Blue
Pipes	PELD, PEHD according to EN-12201 PEX according to BRL-K17301
Other information	Can be used on PEX and SDR17 pipes in combination with Isiflo Support Liner

2. Description of use and Maintenance

Cleaning

Can be cleaned with mild soap water. Use a clean and dampened cloth.

Inspection and control

Check for leakage.

Maintenance instruction and intervals

No maintenance necessary.

3. Operation Technical Information

Estimated technical lifetime without replacements:

>50 years.

Warranty and conditions:

20 years against fabrication errors.

Moisture resistance:

Not affected by moisture.

Easiness of cleaning:

Good.

Other information:

Brass: To be recycled as metal.

Composite: To be recycled as general waste at end of life.

POM and O-rings: General waste.

Product details and instructions for use:

www.isiflo.com

4. Contact

Producer/manufacturer	Isiflo AS
Address	Box 143
Postcode and city	2831 Raufoss
Phone	(+47) 61152700
E-mail	info@isiflo.com
Web	www.isiflo.com